

**Anti-RAB6A Antibody**  
**Rabbit polyclonal antibody to RAB6A**  
**Catalog # AP60503****Specification**

---

**Anti-RAB6A Antibody - Product Information**

Application	WB, IHC
Primary Accession	<a href="#">P20340</a>
Other Accession	<a href="#">P35279</a>
Reactivity	Human, Mouse, Rat, Zebrafish, Chicken
Host	Rabbit
Clonality	Polyclonal
Calculated MW	23593

**Anti-RAB6A Antibody - Additional Information****Gene ID** 5870**Other Names**

RAB6; Ras-related protein Rab-6A; Rab-6

**Target/Specificity**

Recognizes endogenous levels of RAB6A protein.

**Dilution**

WB~~WB (1/500 - 1/1000), IH (1/100 - 1/200)

IHC~~1:100~500

**Format**

Liquid in 0.42% Potassium phosphate, 0.87% Sodium chloride, pH 7.3, 30% glycerol, and 0.09% (W/V) sodium azide.

**Storage**

Store at -20 °C. Stable for 12 months from date of receipt

**Anti-RAB6A Antibody - Protein Information****Name** RAB6A ([HGNC:9786](#))**Synonyms** RAB6**Function**

The small GTPases Rab are key regulators of intracellular membrane trafficking, from the formation of transport vesicles to their fusion with membranes (PubMed:<a href="http://www.uniprot.org/citations/25962623" target="\_blank">25962623</a>). Rabs cycle between an inactive GDP-bound form and an active GTP-bound form that is able to recruit to membranes different sets of downstream effectors directly responsible for vesicle formation, movement, tethering and fusion (PubMed:<a href="http://www.uniprot.org/citations/25962623"

target="\_blank">25962623</a>). RAB6A acts as a regulator of COPI-independent retrograde transport from the Golgi apparatus towards the endoplasmic reticulum (ER) (PubMed:<a href="http://www.uniprot.org/citations/25962623" target="\_blank">25962623</a>). Has a low GTPase activity (PubMed:<a href="http://www.uniprot.org/citations/25962623" target="\_blank">25962623</a>). Recruits VPS13B to the Golgi membrane (PubMed:<a href="http://www.uniprot.org/citations/25492866" target="\_blank">25492866</a>). Plays a role in neuron projection development (Probable).

#### Cellular Location

Golgi apparatus membrane; Lipid- anchor. Cytoplasmic vesicle, secretory vesicle, acrosome membrane {ECO:0000250|UniProtKB:P35279}; Peripheral membrane protein. Note=BICD2 facilitates its targeting to Golgi apparatus membrane. [Isoform 2]: Golgi apparatus membrane; Lipid-anchor

#### Tissue Location

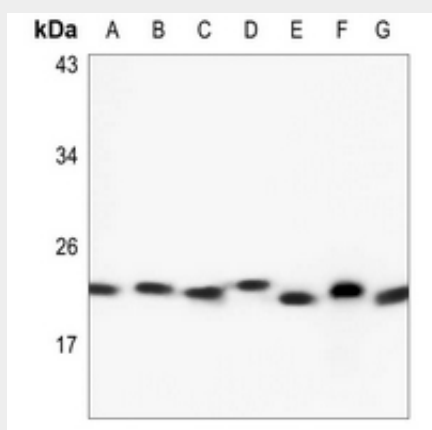
Ubiquitous..

### Anti-RAB6A Antibody - Protocols

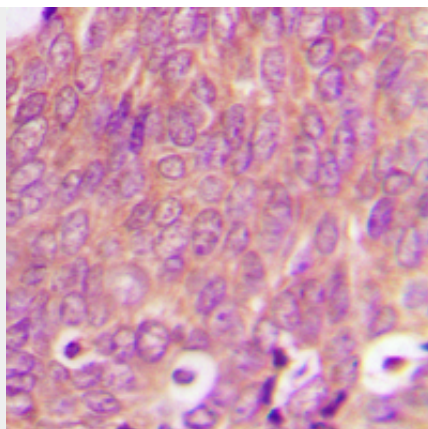
Provided below are standard protocols that you may find useful for product applications.

- [Western Blot](#)
- [Blocking Peptides](#)
- [Dot Blot](#)
- [Immunohistochemistry](#)
- [Immunofluorescence](#)
- [Immunoprecipitation](#)
- [Flow Cytometry](#)
- [Cell Culture](#)

### Anti-RAB6A Antibody - Images



Western blot analysis of RAB6A expression in MEF (A), H1792 (B), MCF7 (C), mouse kidney (D), mouse testis (E), rat kidney (F), rat testis (G) whole cell lysates.



Immunohistochemical analysis of RAB6A staining in human breast cancer formalin fixed paraffin embedded tissue section. The section was pre-treated using heat mediated antigen retrieval with sodium citrate buffer (pH 6.0). The section was then incubated with the antibody at room temperature and detected using an HRP conjugated compact polymer system. DAB was used as the chromogen. The section was then counterstained with haematoxylin and mounted with DPX.

#### **Anti-RAB6A Antibody - Background**

KLH-conjugated synthetic peptide encompassing a sequence within the center region of human RAB6A. The exact sequence is proprietary.